

POWER

DURABILITY

ENGINEERING

lofrans WINDLASSES 



Lofrans Anchor Windlasses have long been the standard of excellence all around the world.

For three generations, one family has run this business with a determined focus: to design and manufacture superior windlasses.

Today, Lofrans produces more windlasses than any other manufacturer. Their reputation for quality, reliability and customer service have made Lofrans windlasses popular with yacht owners everywhere.

Imtra® Corporation supports Lofrans' worldwide service network by providing technical expertise, product availability and full warranty service in North America.

Lofrans windlasses are built to give you complete satisfaction over the long haul. To find out more, contact Imtra or your local Lofrans dealer.



LOFRANS WINDLASSES HAVE WHAT IT TAKES.



Making anchoring
easy takes hard work
– by your windlass.

So, it's important that

this piece of equipment has what it takes in solid construction and exceptional engineering.

Here's what Lofrans does:

Lofrans uses purpose-built (for maritime exposure), series-wound electric motors – for higher power ratings, faster retrieval speeds, easy servicing, greater dependability and longer lasting service.

Lofrans' worm drives and main shafts are made of high-torque stainless steel (38NCD4); gears and clutch cones are bronze (UNI5274). Chain wheels are nickel-plated bronze – where competitors use less durable aluminum, even plastic!

Lofrans' unique aluminum collar design (most competitors' are steel) won't bind or corrode over years in a saltwater environment. And many of our components are hot forged, a more costly method to achieve higher strength (from a more compact

molecular structure) and better surface condition.

Lofrans is the only manufacturer to offer thru-deck windlasses with double seals to keep water out and double bearings to ensure a lifetime of reliable operation. Our vertical windlass gearbox assemblies have a multi-position mounting arrangement, allowing the motor to be oriented in virtually any direction below deck.



Fleming Yachts

Safety concerns drive us to offer manual override. Experience leads us to combination wheels which securely hold chain and positively yet kindly grip rope. And practicality is seen in the easy way that Lofrans windlasses can be installed and maintained.



Hallberg-Rassy

HOW TO BUY AN ANCHOR WINDLASS

1. WHY USE A WINDLASS?

Hauling up your anchor can be heavy work. On a slippery or pitching deck, it can become dangerous. A windlass gives you a mechanical advantage and takes the strain and wear – instead of your back and hands.

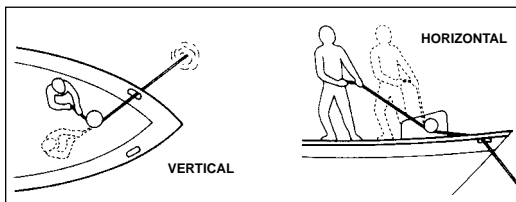
2. MANUAL OR ELECTRIC?

With a manual windlass, you provide the energy; with an electric, you simply give instructions (by hand or foot controls). Manuals are less expensive, easier to install and require neither wiring nor electricity. But electrics are easier, quicker and certainly more fun, which explains why most people prefer them. Most of Lofrans' electric models provide manual override for security, should your yacht's electrical system fail.

3. VERTICAL OR HORIZONTAL?

There are two basic types of anchor windlass: vertical and horizontal.

Vertical windlasses place the chain wheel and/or capstan drum on a vertical drive shaft above the gearbox and motor, which are mounted below the deck. The "topworks" can thus be lower in profile, even in models which have both a chain wheel and a drum.



Horizontal models mount the chain wheel and capstan on either side of the on-deck housing which usually contains both the motor and gearbox.

Which is best? Verticals take less deck space, allow wider angles of fair-leading, and let you move side to side when tailing. Horizontals let you stand much closer when tailing and, for models with motor and gearbox on deck, do not intrude into cabin space below the deck.

4. WHERE TO MOUNT?

With either type, a windlass should normally be mounted on the yacht's centerline with the chain in close alignment to a line drawn from the chain wheel through the bow roller (or chock) to straight ahead in the water.

It is important, especially for combination rodes, to locate your windlass so that, as rope is stripped from chain wheel or drum, it can "fall" directly into the rope locker. The depth of that locker should be a minimum of 16" below the deck (see #9).

5. CAPSTAN OR LOW-PROFILE?

Lofrans offers several vertical low-profile models for chain as well as combination rope/chain. These



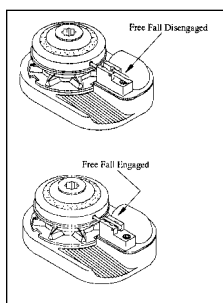
models omit the capstan, dramatically reducing their above-deck height to as little as 3-1/2".

6. COMBINATION ROPE/CHAIN?

Lofrans offers a series of anchor windlasses designed specifically to handle combination rope/chain anchor rodes. These Lofrans units are more than just an all-chain windlass with a different chainwheel. They are engineered from the start to give reliable, fast and easy control of the anchor rode with a minimum of rope wear. The key to Lofrans rope/chain management system is the pressure finger. The fingers on the Marlin and Progress models offer consistent pressure on the rope and/or chain to ensure maximum grip for retrieval and trouble-free operation during anchor deployment. Our finger/deckplate design allows the finger to flex around the rode (especially the rope/chain splice where most windlasses have problems) without over-rotating.



7. FREE-FALL: MANUAL OR REMOTE?



All Lofrans windlasses have power up/power down for controlled hauling or dropping anchor. Most can also be operated in a free-fall mode by manually loosening the clutch with the supplied handle; this lets the gypsy spin freely. Many boaters prefer to

drop anchor in the free-fall mode since it is quicker to just let the anchor drop.

A remote free-fall version is available on many models. This feature allows for fast and quiet free-fall deployment. Most importantly it can be controlled from a remote location such as an upper steering station. Most models with this free-fall option can be operated with the remote feature engaged or as a standard windlass with power-up/power-down operation. Please note that for complete remote operation the yacht must be fitted with an anchor roller that allows the anchor to drop out of the roller when the tension on the rode is

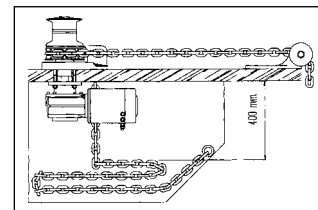
released. Lofrans windlasses with the remote free-fall feature do not include a manual override capability.

8. WHAT TYPE OF CHAIN?

A proper fit of chain to chain wheel is very important. Lofrans offers a variety of chain wheels to fit different sizes and types of chain. For optimum windlass operation, a short-link chain is much preferred. We recommend ISO-specification HT or BBB types of chain.

9. WHAT ABOUT ROPE AND CHAIN LOCKERS?

The location and depth of an anchor locker are important elements in a windlass installation. When the rode is in the anchor locker, the top of the anchor rode should be a minimum of 16" below the underside of the deck. The anchor locker should also be positioned so that the chain and rope feed through the windlass deck plate or hawsepipe directly into the anchor locker.



10. WHAT FINISH WOULD YOU LIKE?



Lofrans offers three exterior finishes. Vertical models are available with top works in clear anodized aluminum or deluxe chromed-bronze finish. With the deluxe chrome, the capstan, baseplate and matching covered chainpipe are polished chromed bronze. Horizontal models have deck housings in clear anodized or two-part ceramic white linear polyurethane.

VERTICALS

Where deck space is limited, vertical windlasses are the answer. Our standard dual-direction motors provide power-up/power-down capability. A manual mode (except on Marlin) delivers emergency backup (handle included). Below-deck motors are compact yet powerful and require only small apertures for installation. Marlin and Progress models offer rope/chain combination

wheels, optional remote free-fall, and your choice of low-profile or capstan configuration.



MARLIN

Power Rating*: 695 lbs/315 kgs

Retrieval Speed/Minute:

@ No Load: 79 ft/min (24 m/min)

@ Working Load: 46 ft/min (14 m/min)

Weight: 20 lbs/ 9 kgs

Voltage: 12 VDC, 24 VDC (700W only)

Std. Motor Wattage: 500-Watt

Opt. Motor Wattage: 700-Watt



PROGRESS I

Power Rating*: 1385 lbs/630 kgs

Retrieval Speed/Minute:

@ No Load: 105 ft/min (32 m/min)

@ Working Load: 59 ft/min (18 m/min)

Weight: 42 lbs/ 19 kgs

Voltage: 12 VDC, 24 VDC

Std. Motor Wattage: 1000-Watt

*Power Rating equals 70% of the load at which the unit will stall.

PROGRESS II

Power Rating*: 2310 lbs/1050 kgs
Retrieval Speed/Minute:
@ No Load: 112 ft/min (34 m/min)
@ Working Load: 62 ft/min (19 m/min)
Weight: 55 lbs/ 25 kgs
Voltage: 12 VDC, 24 VDC
Std. Motor Wattage: 1200-Watt
1500-Watt



ALBATROSS

Power Rating*: 2465 lbs/1120 kgs
Retrieval Speed/Minute:
@ No Load: 112 ft/min (34 m/min)
@ Working Load: 59 ft/min (18 m/min)
Weight: 93 lbs/42 kgs
Voltage: 12 VDC, 24 VDC
Std. Motor Wattage: 1500-Watt (Albatross & Albatross De Luxe)
2500-Watt (Albatross 2500)
Opt. Motor Wattage: 2000-Watt (Albatross & Albatross De Luxe)



Albatross De Luxe



Albatross 2500

MANUAL

Lofrans Royal Manual is a simple and inexpensive way to add better anchor handling to any boat. Its double-action operation makes bringing in the anchor rode a quick and easy job. Supplied with stainless steel operating lever with a comfortable rubber grip. Available in white or clear anodized finish.



ROYAL

Power Rating*: 430 lbs/196 kgs)
Power Ratio: 1.2:1
Weight: 20 lbs/9 kgs



Beneteau

*Power Rating equals 70% of the load at which the unit will stall.

ROPE/CHAIN HORIZONTAL



SeaRay

DORADO 500

Power Rating*: 695 lbs/315 kgs

Retrieval Speed/Minute:

@ No Load: 79 ft/min (24 m/min)

@ Working Load: 46 ft/min (14 m/min)

Weight: 17 lbs/ 8 kgs

Voltage: 12 VDC

Std. Motor Wattage: 500-Watt



Lofrans' latest model was developed as an ultra-compact yet robust and powerful horizontal windlass, whose on-deck size has been dramatically reduced by positioning the motor thru-deck. Its drop-in installation is easy. Very light weight is achieved without sacrificing proper materials. Dorado is supplied with breaker, solenoid and remote toggle; free-fall is optional; additional remotes and other accessories can be added at minimal cost.

DORADO 700

Power Rating*: 925 lbs/420 kgs

Retrieval Speed/Minute:

@ No Load: 92 ft/min (28 m/min)

@ Working Load: 52 ft/min (16 m/min)

Weight: 17 lbs/ 8 kgs

Voltage: 12 VDC, 24 VDC

Std. Motor Wattage: 700-Watt

HORIZONTALS

Where space allows them, these horizontal windlasses (except Kobra) put the motors on deck in sleek housings that provide a more traditional appearance.

Standard with power-up, reversible to power-down, and manual/emergency mode (for which a handle is included). Tigres and Falcon also include a useful top-mounted cleat.

All horizontal models, except Falcon, are available with remote free-fall.



KOBRA

Power Rating*: 1385 lbs/630 kgs
Retrieval Speed/Minute:
@ No Load: 105 ft/min (32 m/min)
@ Working Load: 59 ft/min (18 m/min)
Weight: 41 lbs/ 19 kgs
Voltage: 12 VDC, 24 VDC
Std. Motor Wattage: 1000-Watt



CAYMAN

Power Rating*: 1385 lbs/630 kgs
Retrieval Speed/Minute:
@ No Load: 105 ft/min (32 m/min)
@ Working Load: 59 ft/min (18 m/min)
Weight: 42 lbs/ 21 kgs
Voltage: 12 VDC, 24 VDC
Std. Motor Wattage: 1000-Watt

*Power Rating equals 70% of the load at which the unit will stall.

TIGRES

Power Rating: 1540 lbs/700 kgs
Retrieval Speed/Minute:
 @ No Load: 112 ft/min (34 m/min)
 @ Working Load: 62 ft/min (19 m/min)
Weight: 51 lbs/ 23 kgs
Voltage: 12 VDC, 24 VDC
Std. Motor Wattage: 1200-Watt

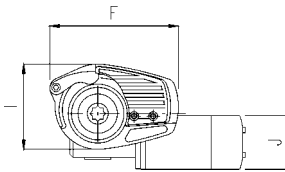
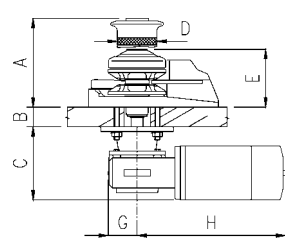


FALKON

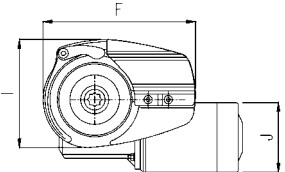
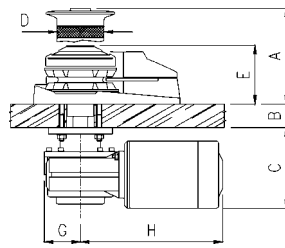
Power Rating: 2310 lbs/1050 kgs
Retrieval Speed/Minute:
 @ No Load: 102 ft/min (31 m/min)
 @ Working Load: 62 ft/min (19 m/min)
Weight: 99 lbs/ 45 kgs
Voltage: 12 VDC, 24 VDC
Std. Motor Wattage: 1500-Watt



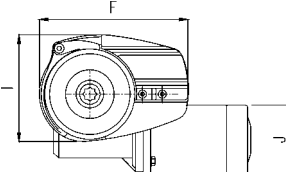
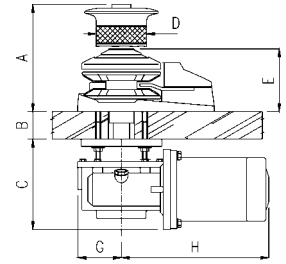
MEASUREMENTS



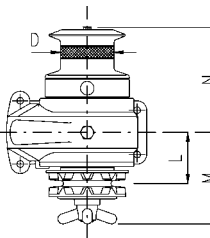
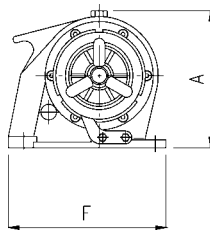
MARLIN



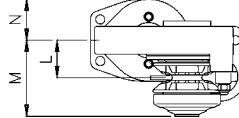
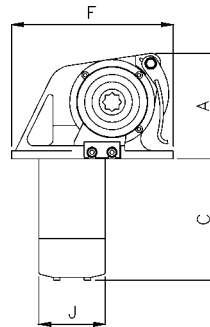
PROGRESS I



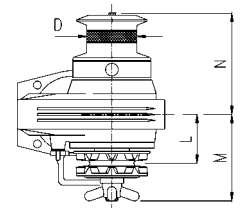
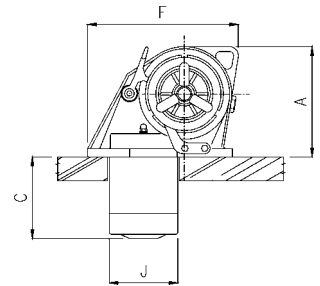
PROGRESS II



ROYAL



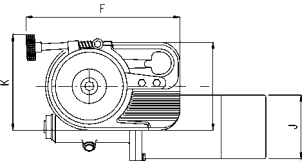
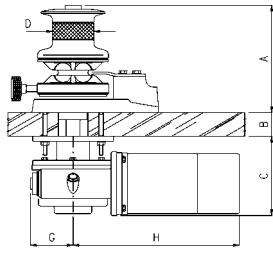
DORADO



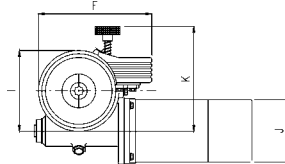
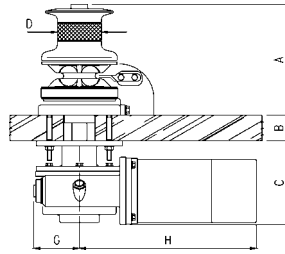
KOBRA

VERTICALS	A		B		C		D		E		F	
	mm	in	mm	in	mm	in	mm	in	mm	in	mm	in
Marlin	135	5-5/16"	min 18 max 35	min 11/16" max 1-7/16"	111	4-3/8"	60	2-3/8"	88	3-7/16"	196	7-11/16"
Progress I	163	6-7/16"	min 20 max 45	min 13/16" max 1-3/4"	137	5-3/8"	85	3-3/8"	100	3-15/16"	249	9-13/16"
Progress II	195	7-11/16"	min 50 max 75	min 2" max 3"	165	6-1/2"	92	3-5/8"	114	4-1/2"	249	9-13/16"
Albatross	269	10-5/8"	min 60 max 90	min 2-3/8" max 3-9/16"	199	7-13/16"	104	4-1/8"			364	14-5/16"
Albatross De Luxe	263	10-3/8"	min 60 max 90	min 2-3/8" max 3-9/16"	199	7-13/16"	104	4-1/8"			273	10-3/4"
Albatross 2500	281	11-1/16"	min 60 max 90	min 2-3/8" max 3-9/16"	199	7-13/16"	104	4-1/8"			270	10-5/8"
HORIZONTALS	A		C		D		F		J			
	mm	in	mm	in	mm	in	mm	in	mm	in		
Royal	192	7-9/16"			85	3-3/8"	222	8-3/4"				
Dorado	130	5-1/8"	151	5-15/16"			200	7-7/8"	82 (500W), 94 (700W)	3-1/4", 3-11/16"		
Kobra	184	7-1/4"	136	5-3/8"	85	3-3/8"	251	9-7/8"	114 (1000W)	3-11/16", 4-1/2"		
Cayman	229	9-1/16"			85	3-3/8"	370	14-9/16"				
Tigres	286	11-1/4"			85	3-3/8"	412	16-1/4"				
Falkon	345	13-5/8"			104	4-1/8"	507	19-15/16"				

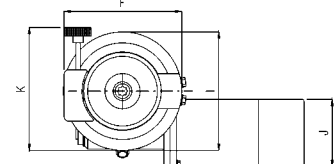
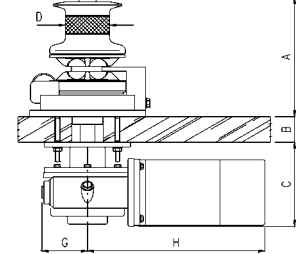
© 2003 Intrac Corporation. Printed in U.S.A. B-6279. Details and specifications are subject to change without notice; consult your dealer or the distributor for the latest information. Lifting rates vary with loads.



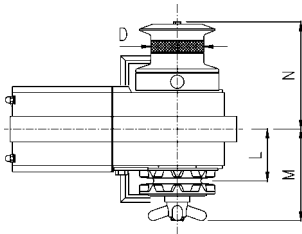
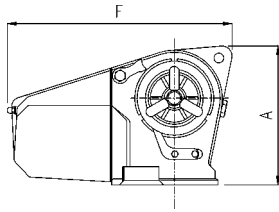
ALBATROSS



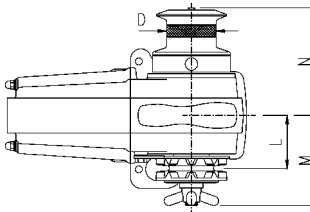
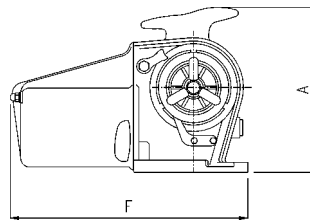
ALBATROSS
DE LUXE



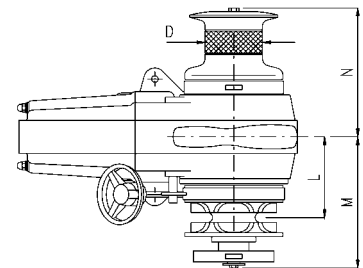
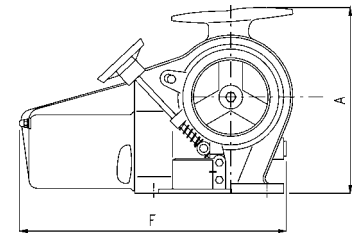
ALBATROSS
2500



CAYMAN



TIGRES



FALKON

	G		H		I		J		K	
	mm	in	mm	in	mm	in	mm	in	mm	in
Marlin	43.5	1-11/16"	225 (500W), 229 (700W)	8-7/8", 9-1/16"	130	5-1/8"	82	3-1/4"		
Progress I	61.5	2-7/16"	242 (1000W)	9-7/16", 9-9/16"	177	6-15/16"	114 (1000W)	3-11/16", 4-1/2"		
Progress II	79	3-1/8"	268 (1200W), 299 (1500W)	10-9/16", 11-3/4"	177	6-15/16"	114 (1200W), 126 (1500W)	4-1/2", 4-15/16"		
Albatross	107	4-1/4"	319 (1500W), 417 (2000W)	12-9/16", 16-7/16"	207	8-1/8"	126 (1500W), 152 (2000W)	4-15/16", 6"	226	8-7/8"
Albatross De Luxe	107	4-1/4"	319 (1500W), 417 (2000W)	12-9/16", 16-7/16"	194	7-5/8"	126 (1500W), 152 (2000W)	4-15/16", 6"	252	9-15/16"
Albatross 2500	107	4-1/4"	417	16-7/16"	272	10-11/16"	152	6"	282	11-1/8"
	L		M		N					
	mm	in	mm	in	mm	in				
Royal	80	3-3/16"	145	5-3/4"	167	6-9/16"				
Dorado	48.5	1-15/16"	98	3-7/8"	53	2-1/16"				
Kobra	83	3-1/4"	147	5-13/16"	173	6-13/16"				
Cayman	83	3-1/4"	147	5-13/16"	173	6-13/16"				
Tigres	95	3-3/4"	155	6-1/8"	185	7-5/16"				
Falkon	147	5-13/16"	238	9-3/8"	234	9-1/4"				

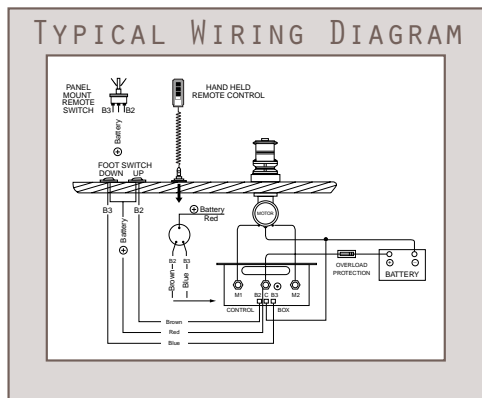
Lofrans offers Limited Written Warranties on many of its products: copies of those warranties are available upon request.

Telephone (508) 995-7000

SPECIFICATIONS

Model	Wattage	Voltage	Power Rating*		Working Load		Amperes		Retrieval Speed	
			kgs	lbs	kgs	lbs	@no load	@working load	m/mm	@no load
Marlin	500W	12V	315	695	40	90	35	45	24	79
Marlin	700W	12V	420	925	40	90	50	70	28	92
Marlin	700W	24V	420	925	40	90	25	40	28	92
Progress I	1000W	12V	630	1385	100	220	60	115	32	105
Progress I	1000W	24V	630	1385	100	220	30	60	32	105
Progress II	1200W	12V	700	1540	150	330	65	130	32	105
Progress II	1200W	24V	700	1540	150	330	32	65	32	105
Progress II	1500W	12V	1050	2310	150	330	65	135	34	112
Progress II	1500W	24V	1050	2310	150	330	32	70	34	112
Albatross	1500W	12V	1120	2465	200	440	65	150	34	112
Albatross	1500W	24V	1120	2465	200	440	32	85	34	112
Albatross	2000W	24V	1260	2770	200	440	45	90	35	115
Albatross	2500W	24V	1330	2925	200	440	45	90	35	115
Royal	Manual	N/A	196	430	N/A	N/A	N/A	N/A	Manual	
Dorado	500W	12V	315	695	40	90	30	40	24	79
Dorado	700W	12V	420	925	40	90	50	70	28	92
Dorado	700W	24V	420	925	40	90	25	40	28	92
Kobra	1000W	12V	630	1385	100	220	60	115	32	105
Kobra	1000W	24V	630	1385	100	220	30	60	32	105
Cayman	1000W	12V	630	1385	100	220	60	115	32	105
Cayman	1000W	24V	630	1385	100	220	30	60	32	105
Tigres	1200W	12V	700	1540	100	220	65	125	34	112
Tigres	1200W	24V	700	1540	100	220	32	65	34	112
Falkon	1500W	12V	1050	2310	150	330	65	135	31	102
Falkon	1500W	24V	1050	2310	150	330	32	70	31	102

*Power Rating = 70% of the load at which the unit will stall



INSTALLATION

Most windlass installations are performed by yachtbuilders or boatyards. However this work can be done by yacht owners themselves, provided they are reasonably competent craftsmen and knowledgeable about marine electrical systems. Please follow the complete installation and operating instructions which are provided with each Lofrans windlass to ensure safe and reliable performance.

CONDUCTOR SIZES (GAUGE) FOR 3% DROP IN VOLTAGE

12 Volts Total Current On Circuit	Length of conductor from source of current to windlass and back to source - in feet.										24 Volts Total Current On Circuit	Length of conductor from source of current to windlass and back to source - in feet.									
	20	25	30	40	50	60	70	80	90	100		20	25	30	40	50	60	70	80	90	100
30 Amps	6	6	4	4	2	2	1	1	0	0	30 Amps	10	8	8	6	6	4	4	4	2	2
40 Amps	6	4	4	2	2	1	0	0	2/0	2/0	40 Amps	8	6	6	6	4	4	2	2	2	2
50 Amps	4	4	2	2	1	0	2/0	2/0	3/0	3/0	50 Amps	6	6	6	4	4	2	2	2	1	1
60 Amps	4	2	2	1	0	2/0	3/0	3/0	4/0	4/0	60 Amps	6	6	4	4	2	2	1	1	0	0
70 Amps	2	2	1	0	2/0	3/0	3/0	4/0	4/0		70 Amps	6	4	4	2	2	1	1	0	0	2/0
80 Amps	2	2	1	0	3/0	3/0	4/0	4/0			80 Amps	6	4	4	2	2	1	0	0	2/0	2/0
90 Amps	2	1	0	2/0	3/0	4/0	4/0				90 Amps	4	4	2	2	1	0	0	2/0	2/0	3/0
100 Amps	2	1	0	2/0	3/0	4/0					100 Amps	4	4	2	2	1	0	2/0	2/0	3/0	3/0

Based on minimum CM area. ©1998 American Boat and Yacht Council, Inc.

In the event of a conflict between a voltage-drop calculation for wiring sizes and these ampacity tables, use the larger wire size.

Retrieval Speed @working load m/mm		Minimum Deck Thickness + mm		Maximum Deck Thickness + mm		Chain Sizes (ALL = HT, BBB and PC)	Rope Sizes
14	46	18	11/16"	35	1-7/16"	3/16"BBB, 1/4"HT, 5/16"HT	1/2", 9/16"
16	52	18	11/16"	35	1-7/16"	3/16"BBB, 1/4"HT, 5/16"HT	1/2", 9/16"
16	52	18	11/16"	35	1-7/16"	3/16"BBB, 1/4"HT, 5/16"HT	1/2", 9/16"
18	59	20	13/16"	45	1-3/4"	5/16"HT, 5/16"BBB	1/2", 9/16", 5/8"
18	59	20	13/16"	45	1-3/4"	5/16"HT, 5/16"BBB	1/2", 9/16", 5/8"
15	49	50	2"	75	3"	5/16"HT, 5/16"BBB, 3/8"HT	9/16", 5/8", 3/4"
15	49	50	2"	75	3"	5/16"HT, 5/16"BBB, 3/8"HT	9/16", 5/8", 3/4"
19	62	50	2"	75	3"	5/16"HT, 5/16"BBB, 3/8"HT	9/16", 5/8", 3/4"
19	62	50	2"	75	3"	5/16"HT, 5/16"BBB, 3/8"HT	9/16", 5/8", 3/4"
18	59	60	2-3/8"	90	3-9/16"	5/16"ALL, 3/8"ALL, 7/16"HT, 1/2"HT, 1/2"BBB	N/A
18	59	60	2-3/8"	90	3-9/16"	5/16"ALL, 3/8"ALL, 7/16"HT, 1/2"HT, 1/2"BBB	N/A
18	59	60	2-3/8"	90	3-9/16"	5/16"ALL, 3/8"ALL, 7/16"HT, 1/2"HT, 1/2"BBB	N/A
18	59	60	2-3/8"	90	3-9/16"	5/16"ALL, 3/8"ALL, 7/16"HT, 1/2"HT, 1/2"BBB	N/A
Manual		N/A	N/A	N/A	N/A	1/4"HT, 5/16"ALL, 3/8"ALL	N/A
14	46	30	1-3/16"	N/A	N/A	3/16"BBB, 1/4"HT, 5/16"HT	1/2", 9/16"
16	52	30	1-3/16"	N/A	N/A	3/16"BBB, 1/4"HT, 5/16"HT	1/2", 9/16"
16	52	30	1-3/16"	N/A	N/A	3/16"BBB, 1/4"HT, 5/16"HT	1/2", 9/16"
18	59	N/A	N/A	N/A	N/A	1/4"HT, 5/16"ALL, 3/8"ALL	N/A
18	59	N/A	N/A	N/A	N/A	1/4"HT, 5/16"ALL, 3/8"ALL	N/A
18	59	N/A	N/A	N/A	N/A	1/4"HT, 5/16"ALL, 3/8"ALL	N/A
18	59	N/A	N/A	N/A	N/A	1/4"HT, 5/16"ALL, 3/8"ALL	N/A
19	62	N/A	N/A	N/A	N/A	1/4"HT, 5/16"ALL, 3/8"ALL, 7/16"HT	N/A
19	62	N/A	N/A	N/A	N/A	1/4"HT, 5/16"ALL, 3/8"ALL, 7/16"HT	N/A
19	62	N/A	N/A	N/A	N/A	5/16"ALL, 3/8"ALL, 7/16"HT, 1/2"HT, 1/2"BBB	N/A
19	62	N/A	N/A	N/A	N/A	5/16"ALL, 3/8"ALL, 7/16"HT, 1/2"HT, 1/2"BBB	N/A

+ Marlin, Progress I and Progress II models are also available with Extra Deck Clearance that increases both the minimum and maximum deck thickness. Please inquire for more information.

MAINTENANCE

Maintenance instructions are provided with each Lofrans windlass and should be carefully followed. The only ongoing maintenance your Lofrans windlass should require is periodic lubrication of the clutch cones plus checking of and, if necessary, topping off the oil system.

Those who wish to keep their Lofrans windlass in perfect condition may choose to clean and wax the chrome-plated and aluminum parts. Maintaining an anchoring system involves more than just the windlass.

A prudent maintenance program requires periodic inspection of chain, bow rollers, chocks plus all connections and fastenings. Of course, the selection of a dependable anchor and its periodic inspection are basic requirements, regardless of windlass type or use.



CHAINWHEELS

Lofrans windlasses can be fitted with chain wheels or combination rope/chain wheels to accept a wide range of chain types and sizes. It is very important to match your wheel with your anchor chain.

We recommend a short-link type of chain (ISO-specification HT or BBB) because its configuration puts more links in contact with the jaws of the wheel: this minimizes slippage and provides superior performance with enhanced safety.

When ordering your Lofrans windlass, be sure to specify your chain size and type so that your unit will be fitted with the proper wheel.

SELECTION

Hull length:		20	25	30	35	40	45	50	55	60	70	80	90	100	110
feet		6	7.5	9	10.5	12	13.5	15	16.5	18	21	24	27	30	33
meters															
VERTICAL															
Marlin	500W	✓	✓	✓											
Marlin	700W	✓	✓	✓	✓										
Progress I	1000W		✓	✓	✓	✓	✓								
Progress II	1200W			✓	✓	✓	✓	✓							
Progress II	1500W			✓	✓	✓	✓	✓	✓						
Albatross	1500W					✓	✓	✓	✓	✓					
Albatross	2000W					✓	✓	✓	✓	✓	✓				
Albatross	2500W						✓	✓	✓	✓	✓	✓			
HORIZONTAL															
Royal	Manual	✓	✓	✓	✓	✓									
Dorado	500W	✓	✓	✓											
Dorado	700W	✓	✓	✓	✓										
Kobra	1000W		✓	✓	✓	✓	✓								
Cayman	1000W		✓	✓	✓	✓	✓								
Tigres	1200W			✓	✓	✓	✓	✓							
Falkon	1500W					✓	✓	✓	✓	✓	✓				

Above recommendations for model selection by yacht length are intended for guidance purposes only; actual selection should be made after consulting with competent engineers. Installation and operating instructions should be carefully followed to prevent damage or injury.

HEAVY-LIFT

For larger yachts (65' to over 100'), Lofrans offers vertical and horizontal heavy-lift windlasses complete with a wide range of drum and chain wheel options.

To find out more about Lofrans heavy-lift windlasses, please contact Imtra or visit www.imtra.com.



shown: Titan - Model B
(2 chain wheels plus capstan)



www.imtra.com

Imtra Corporation, 30 Samuel Barnett Boulevard, New Bedford, Massachusetts 02745 USA

Phone: 508-995-7000 Fax: 508-998-5359

E-mail: Lofrans@imtra.com