



Compact Horizontal Windlasses

The powerful Compact range of horizontal windlasses provides the perfect alternative to vertical models for all recreational, commercial and fishing vessels up to 25 metres.

Compact series of horizontal windlasses are ideal for installations where chain locker space is at a premium or not easily accessible. These complete above deck units are constructed from durable marine alloy housings enclosing the powerful and heavy duty motor and gearbox, waterproofing and protecting it from the harsh elements. All running gear is designed for durability and performance, manufactured from marine grade bronze with luxury chrome or optional traditional polished bronze finish.

The Compact series incorporates many of the innovative features available across the Atlantic range.

ROPE CHAIN MANAGEMENT SYSTEM (RCMS)

All compact models can be used with rope-chain anchor rodes.

The Rope Chain Management System (RCMS) facilitates smooth rope-chain operation and is available by replacing a standard chain pipe with the RCMS unit. RCMS incorporates a spring loaded finger arrangement fitted to a separate chain pipe that directs and pushes the rope into the inner jaw of the gypsy whilst allowing the chain to follow and pass through automatically. A stripper/peeler assembly fits around the gypsy hub to prevent the rope from jamming and facilitates a smooth vertical drop into the chain locker. RCMS is an integrated and standard unit on the HR600 and HR700 and should be considered for all Compact models where rope-chain combination is being utilised.

INDEPENDENT ROPE CAPSTAN OPERATION

Most Compact models feature a knurled capstan that can be operated independently of the gypsy/chainwheel for line handling or auxillary purposes.

MANUAL OPERATION

Manual operation is standard on all models from HR1200 to 4200 ensuring complete back up should battery power fail or emergency situation prevail.

EASE OF INSTALLATION

Installation of the Compact range is quick & simple with no separate drive assembly to be mounted below deck.

PERFORMANCE

Operational performance of the Compact models is further enhanced by the high vertical drop to the chain locker and the 90 degree wrap of chain and rope on the gypsy that provides quick and trouble free deployment and retrieval.

AUTOMATIC FREEFALL

Muir's Compact range of windlasses includes automatic freefall models. These windlasses provide AUTOMATIC and rapid free fall with a simple flick of a switch from the helm. The freefall can be interrupted at any stage. Ideal for single-handed boating, fishing, or for vessels with inaccessible foredecks. For further information refer to page 6.

AND MORE...

The Compact range is available in 12 & 24 volt and hydraulic options. Muir offer a full range of accessories to suit the Compact models including electric controls, chain, rope, anchors, anchor rollers and chain stoppers.



Compact Automatic Freefalls

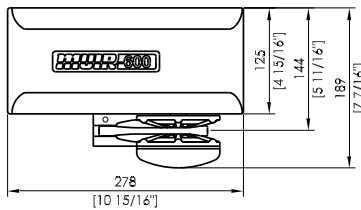
600/700/2500



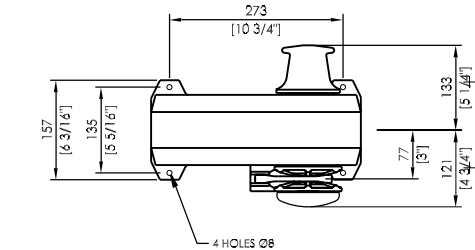
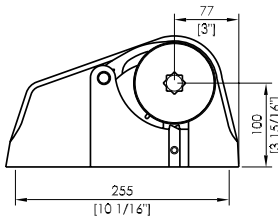
HFF600



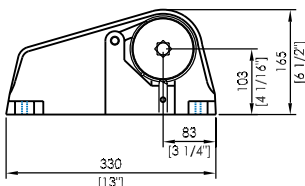
HFF700



HFF600



HFF700



	New Model	New Model	New Model
Model	HFF600	HFF700	HFF2500
VESSEL LENGTH	5 - 8m 16 - 26ft	8 - 11m 26 - 35ft	12 - 17m 38 - 55ft
POWER SUPPLY (DC)	12V	12V/24V	12/24V/HYD
MOTOR (Watts)	200	600	1200
HYDRAULIC PRESSURE	N/A N/A	N/A N/A	8Mpa 1160PSI
HYDRAULIC FLOW	N/A N/A	N/A N/A	20L/min 5.5gal/min
MAX LOAD	272kg 600lb	318kg 700lb	1136kg 2500lb
WORK LOAD	29kg 63lb	57kg 125lb	284kg 624lb
AMPS WORK LOAD	40	80	120/70
MAX LINE SPEED	25m/min 80ft/min	25m/min 80ft/min	15m/min 48ft/min
CHAIN SIZE	6 - 7mm 1/4 - 9/32"	6 - 8mm 1/4 - 5/16"	8 - 10 - 13mm 5/16 - 3/8" - 1/2"
ROPE SIZE	12mm 1/2"	12 - 14mm 1/2 - 9/16"	12 - 14 - 16mm 1/2 - 9/16 - 5/8"
NET WEIGHT	DC 10kg DC 22lb	DC 12kg DC 26lb	DC 36 HYD 35kg DC 79 HYD 77lb
MANUAL OPERATION	N/A	N/A	MORS (std)

Features

- Automatic freefall capability
- Rope chain combination gypsy for rope and chain combination or chain only
- Rope Chain Management System (RCMS)
- Heavy duty dual direction motor in 12 & 24V DC, Hydraulic (HFF2500 only)
- Durable marine grade white gloss finish alloy housing
- Fully enclosed motor and gearbox
- Luxury chromed marine grade bronze running gear
- Stainless steel shaft
- Cone clutch/brake
- Stainless steel mounting bolts (H600 only)
- Shaft seal
- Low current consumption
- Manual override to gypsy on HFF2500
- Installation/Operation booklet



Options

- Traditional polished bronze finish on running gear
- Full range of accessories including chain, rope, anchors, anchor roller, chain pipes, chain stoppers, snubber kits & devil claws
- Electric & hydraulic operating options & accessories