



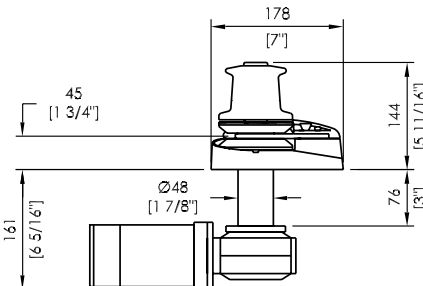
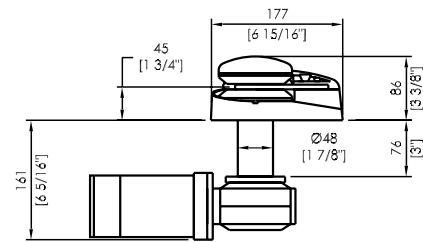
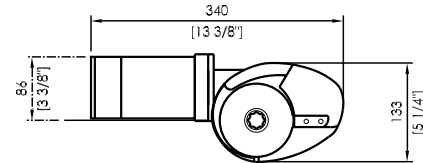
Atlantic 600



VR600



VRC600



New Inline

Model	VR/VRC600	VR/VRC600
VESSEL LENGTH	5 - 9m 16 - 29ft	5 - 9m 16 - 29ft
POWER SUPPLY (DC)	12/24V	12/24V
MOTOR (Watts)	200 or 600/600	600
MAX LOAD	115kg/227kg 253lb/500lb	300kg 660lb
WORK LOAD	29kg/57kg 64lb/125lb	75kg 165lb
AMPS WORK LOAD	40/80	40/80
MAX LINE SPEED	25m/min 80ft/min	25m/min 80ft/min
CHAIN SIZE	6 - 7mm 1/4 - 9/32"	6 - 7mm 1/4 - 9/32"
ROPE SIZE	12mm 1/2"	12mm 1/2"
NET WEIGHT	DC VR 12kg VRC 12.5kg DC VR 26lb VRC 28lb	VR 12kg VRC 12.5kg VR 26lb VRC 28lb
MANUAL OPERATION	N/A	N/A

Features

- Rope chain combination gypsy for rope and chain combination or chain only.
- Rope Chain Management System (RCMS)
- Quick release integrated swivel chain pipe cover
- Gypsy with capstan (VRC) or gypsy with low profile clutch top arrangement (VR)
- Heavy duty marine grade, dual direction motor in 12V DC, 24V available on 600watt model
- Luxury chromed finish over marine grade bronze
- Independent gypsy and capstan operation
- Capstan models feature heavy duty knurled finish for increased grip
- Self aligning gearbox/adaptor
- Stainless steel shaft
- Cone clutch/brake
- Stainless steel mounting bolts
- Shaft seal
- Lubricating grease nipple
- Clutch release handle
- Installation/Operation booklet

Options

- 200w or 600w motor
- Gypsy lock
- Inline drive
- Traditional polished bronze finish
- Extra deck clearance kit for any deck thickness
- Full range of accessories including chain, rope, anchors, anchor roller, chain stoppers, snubber kits, devil claws
- Electrical operating options & accessories
- Auto anchor



Muir Atlantic 600 Inline