



Atlantic Automatic Freefalls

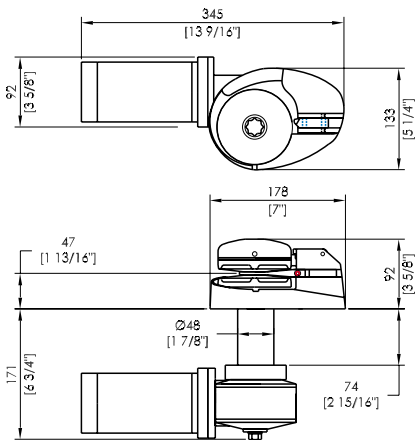
600/1050/2200



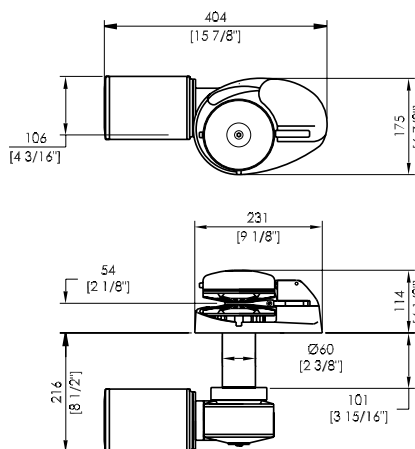
VFF600



VFF1050/2200



VFF600



VFF1050/2200

	New Model	New Model	New Model
Model	VFF600	VFF1050	VFF2200
VESSEL LENGTH	5 - 9m 16 - 29ft	9 - 13m 29 - 42ft	12 - 16m 38 - 51ft
POWER SUPPLY (DC)	12V	12V/24V	12V/24V
MOTOR (Watts)	200 or 600	1000	1200
HYDRAULIC PRESSURE	N/A N/A	7MPa 1000PSI	10MPa 1450PSI
HYDRAULIC FLOW	N/A N/A	15L/min 4gal/min	15L/min 4gal/min
MAX LOAD	115kg/227kg 253lb/500lb	500kg 1100lb	1000kg 2200lb
WORK LOAD	29kg/57kg 63lb/125lb	125kg 275lb	250kg 550lb
AMPS WORK LOAD	40/80	100/60	120/75
MAX LINE SPEED	20m/min 64ft/min	16m/min 52ft/min	15m/min 48ft/min
CHAIN SIZE	6 - 7mm 1/4 - 9/32"	8 - 10mm 5/16 - 3/8"	8 - 10mm 5/16 - 3/8"
ROPE SIZE	12mm 1/2"	14 - 16mm 9/16 - 5/8"	14 - 16mm 9/16 - 5/8"
NET WEIGHT	DC 12kg DC 26lb	DC & HYD 24kg DC & HYD 53lb	DC 31kg HYD 27kg DC 68lb HYD 59lb
MANUAL OPERATION	N/A	N/A	N/A

Features

- Automatic freefall capability
- Rope chain combination gypsy for rope and chain combination or chain only
- Rope Chain Management System (RCMS)
- Sleek low profile clutch top arrangement
- Heavy duty dual direction motor in 12 & 24V DC, Hydraulic VFF1050/2200 only
- Luxury chromed finish over marine grade bronze
- Self aligning gearbox/adaptor
- Stainless steel shaft
- Cone clutch/brake
- Stainless steel mounting bolts
- Shaft seal
- Lubricating grease nipple
- Clutch release handle
- Installation/Operation booklet



Options

- Traditional polished bronze finish
- Extra deck clearance kit for any deck thickness
- Full range of accessories including chain, rope, anchors, anchor roller, chain stoppers, snubber kits & devil claws
- Electric & hydraulic operating options & accessories