



*Picture shown with steering wheel*

## **MODEL 7035 TILT UP STEERING**

Due to the simplified construction and selection of superb materials, this pump would outlast any other product on the market by 10 to 1.

The KOBELT design eliminates the universal joint. Instead, the entire helm pump moves with the wheel as an integral unit when rotated up or down.

The tilting mechanism provides five locking positions at 10° increments with a total rotation of 50°. This unit is available with helm pumps Model 7031 or Model 7004.

The pump Model 7031 has options of 2 cu. in. or 2.6 cu. in. volume per turn and our Model 7004 has a nominal volume of 3.4 cu. in. or 4.5 cu. in. per turn.

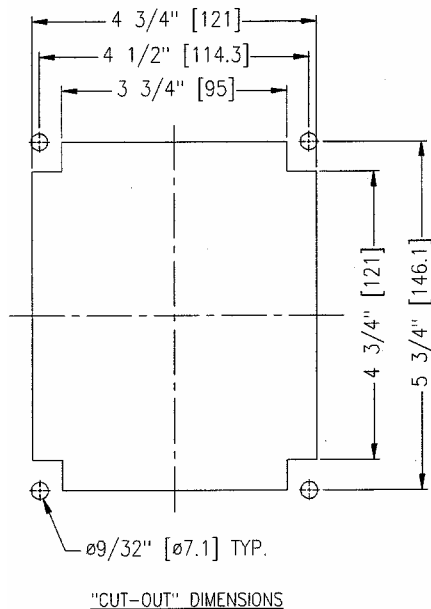
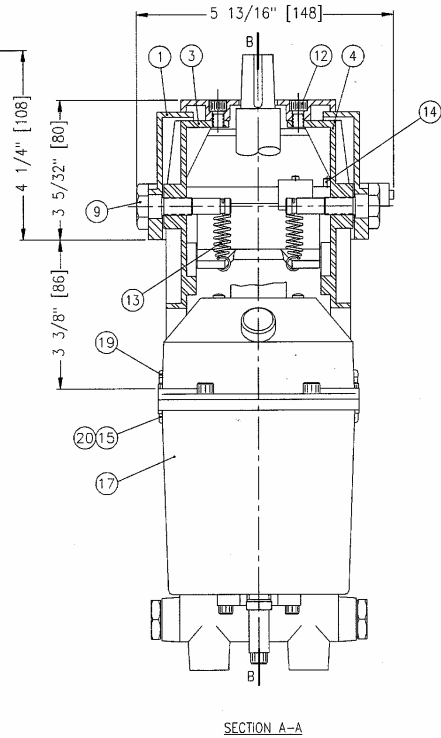
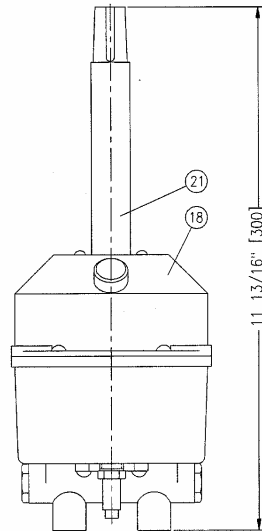
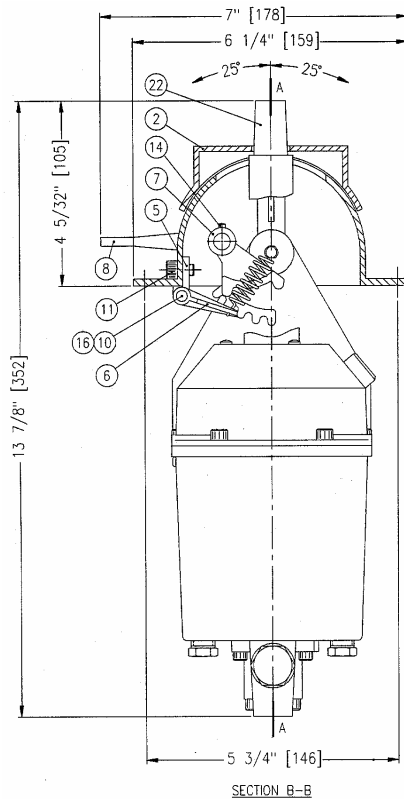
The tilt up mechanism and the helm pumps are constructed in bronze with stainless steel hardware. The pumps have hardened pistons, standard thrust and ball bearings.

The Model 7035 Tilt Up Steering is manufactured under U.S. Patent No. 5676081.

### **OPTIONS**

|                |                    |
|----------------|--------------------|
| <b>7035</b>    | <b>2 cu. in.</b>   |
| <b>7035-X</b>  | <b>2.6 cu. in.</b> |
| <b>7035-O</b>  | <b>3.4 cu. in.</b> |
| <b>7035-OX</b> | <b>4.5 cu. in.</b> |

# MODEL 7035



All dimensions in inches (mm)

| ITEM | QTY | PART NUMBER | DESCRIPTION               |
|------|-----|-------------|---------------------------|
| 1    | 1   | 7035-0001   | Dome                      |
| 2    | 1   | 7035-0002   | Cover                     |
| 3    | 1   | 7035-0003   | Left Hand Support         |
| 4    | 1   | 7035-0004   | Right Hand Support        |
| 5    | 2   | 7035-0005   | Bearing                   |
| 6    | 1   | 7035-0006   | Tilt Lock                 |
| 7    | 1   | 7035-0007   | Cam                       |
| 8    | 1   | 7035-0008   | Lever                     |
| 9    | 2   | 7035-0009   | Shoulder Bolt             |
| 10   | 1   | 7035-0010   | Shaft                     |
| 11   | 2   | 1002-1006   | Hex Socket Head Cap Screw |
| 12   | 2   | 1002-1008   | Hex Socket Head Cap Screw |
| 13   | 2   | 1202-0005   | Spring                    |
| 14   | 2   | 1024-0512   | Spring Pin                |
| 15   | 4   | 1023-0310   | Lock Washer               |
| 16   | 2*  | 1029-1025   | Snap Ring                 |
| 17   | 1*  | 7004        | Helm Pump                 |
| 18   | 1*  | 7031        | Helm Pump                 |
| 19   | 4   | 1001-1020   | Hex Bolt                  |
| 20   | 4   | 1022-0110   | Hex Nut                   |
| 21   | 1*  | 7035-0012   | Tapered Shaft (7031 pump) |
| 22   | 1*  | 7035-1012   | Tapered Shaft (7004 pump) |

\* Quantity may vary with options