

NEW STORM

MUIR  SINCE 1968

MUIR  SINCE 1968

STAINLESS STEEL RANGE



The New Storm Stainless Steel Range from Muir epitomises the latest in anchor windlass technology.

Designed for vessels 8 - 15m (26-48ft), and in low profile and capstan configurations, the Storm Stainless Steel Windlasses offer fast powered retrieval, smooth rope chain combination operation, reduced installation time, style and unbeatable reliability.

Manufactured from polished stainless steel components the Storm Windlass will weather the harshest of conditions.

Storm Windlasses represent the pinnacle of reliability and performance and are packed with the features and quality you have come to expect from Muir. Designed on the principals of the award winning Atlantic series, with all its features and more...

The Storm Stainless Steel Range is backed by a 3 year warranty and supported by an extensive worldwide sales and service network.

When precision engineering, high performance, service, quality controlled design and manufacturing count... it's the new Storm Stainless Steel Range from Muir.



- AUSTRALIA ■ NEW ZEALAND ■ EUROPE ■ UK ■ USA
- AMERICAS ■ ASIA ■ MIDDLE EAST ■ PACIFIC ■ SCANDINAVIA

Muir products are sold, serviced and supported worldwide.

Head Office:
MUIR Windlasses Australia
100 Browns Road, Kingston
Tasmania 7050, Australia

Tel Int: +61 (0)3 6211 8811
Fax Int: +61 (0)3 6229 7030
Email: info@muir.com.au



©2006 Muir Engineering Pty. Ltd. Muir reserves the right to alter specifications without notice. All rights reserved. While all due care and attention has been taken in the preparation of this brochure no responsibility shall be taken for errors or omissions.

THIS BROCHURE SHOULD NOT BE USED FOR INSTALLATION PURPOSES
Any reference to MUIR or MUIR'S in this brochure implies MUIR ENGINEERING PTY. LTD.

www.muir.com.au

THE WORLD POWER IN ANCHORING SYSTEMS



30 Samuel Barnet Boulevard
New Bedford, MA 02745
Phone: (508) 995-7000 Fax: (508) 998-5359
www.imtra.com



NEW
STORM
STAINLESS STEEL RANGE

NEW

STORM VR/VRC850

VESSEL LENGTH
8 - 11m (26 - 35 ft)

POWER SUPPLY (DC)
12V/24V

MOTOR (Watts)
600

MAX LOAD
386kg (850lb)

WORK LOAD
96kg (212lb)

AMPS WORK LOAD
80/50

MAX LINE SPEED
24m/min (77ft/min)

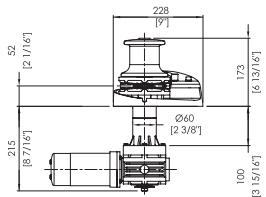
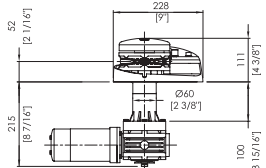
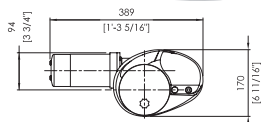
CHAIN SIZE
6 - 8 - 10mm (1/4" - 5/16" - 3/8")

ROPE SIZE
12 - 14 - 16mm (1/2" - 9/16" - 5/8")

MANUAL OPERATION
MOS (Optional)



VR850
VRC850



VR/VRC850 - FEATURES

- Polished stainless steel components.
- Rope chain combination gypsy for rope and chain combination or chain only
- Rope Chain Management System (RCMS)
- Quick release integrated swivel chain pipe cover
- Gypsy with low profile clutch top arrangement
- Heavy duty marine grade, dual direction motor in 12V and 24V DC
- Independent gypsy and capstan operation
- Capstan models feature heavy duty knurled finish for increased grip
- Self-aligning gearbox/adaptor
- Stainless steel shaft

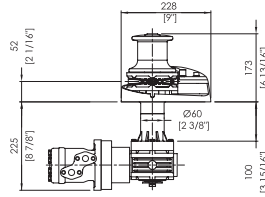
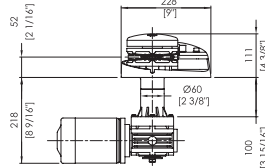
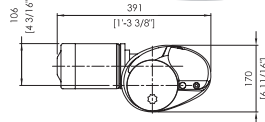
- Cone clutch/brake
- Stainless steel mounting bolts
- Shaft seal
- Self lubricating bush
- Clutch release handle
- Installation/Operation booklet

VR/VRC850 - OPTIONS

- Manual Operation System (MOS)
- Extra deck clearance kit for deck up to 150mm/6"
- Full range of accessories including chain, rope, anchors, anchor roller, chain stoppers, snubber kits and devil claws
- Electrical operating options and accessories
- Auto anchor



VR1250
VRC1250



VR/VRC1250 - FEATURES

- Polished stainless steel components
- Rope chain combination gypsy for rope and chain combination or chain only
- Rope Chain Management System (RCMS)
- Quick release integrated swivel chain pipe cover
- Gypsy with low profile clutch top arrangement
- Heavy duty marine grade, dual direction motor in 12V and 24V DC, Hydraulic
- Independent gypsy and capstan operation
- Capstan model features heavy duty knurled finish for increased grip
- Self-aligning gearbox/adaptor
- Stainless steel shaft

NEW

STORM VR/VRC1250

VESSEL LENGTH
10 - 13m (32 - 42 ft)

POWER SUPPLY (DC)
12V/24V

MOTOR (Watts)
1000

HYDRAULIC PRESSURE
8MPa (1160PSI)

HYDRAULIC FLOW
15L/min (4gal/min)

MAX LOAD
500kg (1100lb)

WORK LOAD
125kg (275lb)

AMPS WORK LOAD
100/60

MAX LINE SPEED
28m/min (90ft/min)

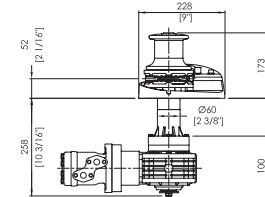
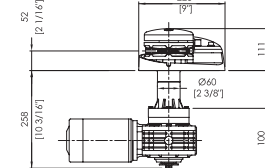
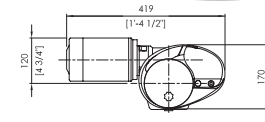
CHAIN SIZE
6 - 8 - 10mm (1/4" - 5/16" - 3/8")

ROPE SIZE
12 - 14 - 16mm (1/2" - 9/16" - 5/8")

MANUAL OPERATION
MOS (Optional)



VR2200
VRC2200



VR/VRC2200 - FEATURES

- Polished stainless steel components
- Rope chain combination gypsy for rope and chain combination or chain only
- Rope Chain Management System (RCMS)
- Quick release integrated swivel chain pipe cover
- Gypsy with low profile clutch top arrangement
- Heavy duty marine grade, dual direction motor in 12V and 24V DC, Hydraulic
- Independent gypsy and capstan operation
- Capstan model features heavy duty knurled finish for increased grip
- Self-aligning gearbox/adaptor
- Stainless steel shaft

NEW

STORM VR/VRC2200

VESSEL LENGTH
12 - 15m (38 - 48 ft)

POWER SUPPLY (DC)
12V/24V

MOTOR (Watts)
1200

HYDRAULIC PRESSURE
10MPa (1450PSI)

HYDRAULIC FLOW
15L/min (4gal/min)

MAX LOAD
1000kg (2200lb)

WORK LOAD
250kg (550lb)

AMPS WORK LOAD
120/75

MAX LINE SPEED
22m/min (71ft/min)

CHAIN SIZE
6 - 8 - 10mm (1/4" - 5/16" - 3/8")

ROPE SIZE
12 - 14 - 16mm (1/2" - 9/16" - 5/8")

MANUAL OPERATION
MOS (Optional)

- Cone clutch/brake
- Stainless steel mounting bolts
- Shaft seal
- Self lubricating bush
- Clutch release handle
- Installation/Operation booklet

VR/VRC2200 - OPTIONS

- Manual Operation System (MOS)
- Extra deck clearance kit for deck up to 150mm/6"
- Full range of accessories including chain, rope, anchors, anchor roller, chain stoppers, snubber kits and devil claws
- Electric and hydraulic operating options and accessories
- Auto anchor