

**ST-06 Throttle Slave Assembly**

**\*INCLUDED IN SEAL KIT ECS-06:**

2 x	Dill Valve	160061
2 x	O-Ring	002222
1 x	O-Ring	223729
1 x	O-Ring	345926
1 x	O-Ring	211027
2 x	O-Ring	211028 (1 extra)
1 x	O-Ring	924022
1 x	O-Ring	211125
1 x	Seal	224011
2 x	Ring	252125
1 x	Wiper	642921

**† INCLUDED IN SHIFT SLAVE REPAIR KIT# 68352K:**

1 x	Lever Arm	610024
1 x	Screw	240057
1 x	Bushing	630044
2 x	Bearing Race	190005
1 x	Bearing	190002
1 x	Pinon Assy	720150

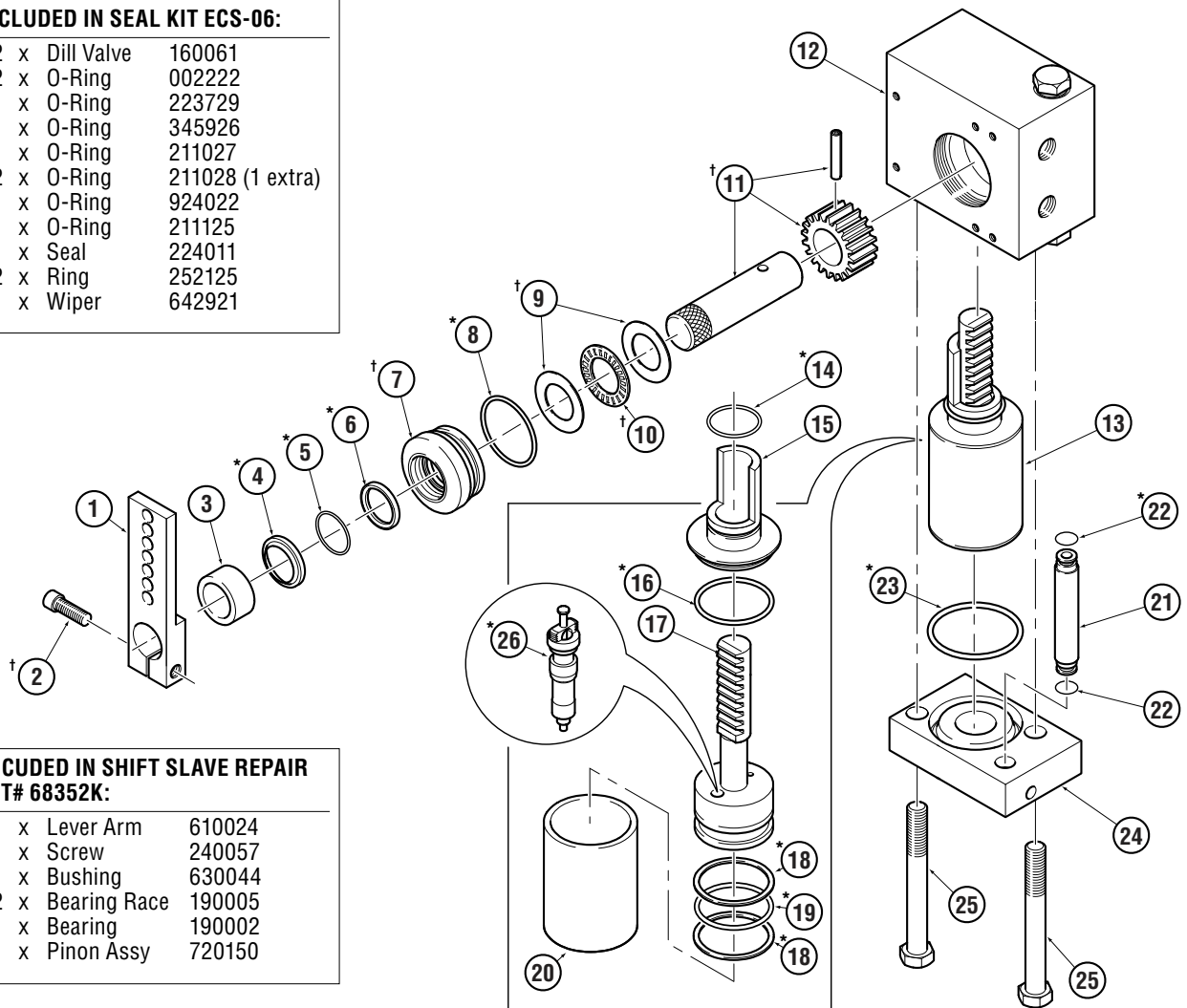


Figure 23.

ITEM	PART #	QTY	DESCRIPTION
†1	610024	1	Lever Arm
†2	240057	1	Screw
3	540018	1	Spacer
*4	642921	1	Wiper
*5	223729	1	O-Ring
*6	224011	1	Quad Seal
†7	630044	1	Bushing
*8	211027	1	O-Ring
†9	190005	2	Bearing Race
†10	190002	1	Bearing
†11	720150	1	Pinion Assembly
12	901054	1	Body
13	501120	1	Cylinder Assembly

ITEM	PART #	QTY	DESCRIPTION
*14	345926	1	O-Ring
15	560034	1	Cylinder End (Eccentric)
*16	211028	1	O-Ring
17	600070	1	Piston Assembly
*18	252125	2	Teflon Back-Up Ring
*19	211125	1	O-Ring
20	500131	1	Cylinder Tube
21	500164	1	Tube
*22	002222	2	O-Ring
*23	924022	1	O-Ring
24	520634	1	Plate
25	240717	2	Bolt
*26	160061	2	Dill Valves