



HOW TO TEST THE SEASTAR POWER ASSIST

⚠ WARNING

The Power Assist **MUST** remain connected to the boat's electrical and hydraulic systems at all times during this procedure.

TEST PROCEDURE

⚠ CAUTION

Care must be taken to ensure no kinking, twisting or any other damage occurs to the hoses while testing.

1. Access the Power Assist's rear cover and remove the screws that hold it in place. Remove the rear cover.
2. At point (A). With the key or remote switch in the 'ON' position, check to ensure there is between 12.5 & 14.5 VDC battery voltage. If there is low or no voltage at this point you must trace the wires and resolve any issue.
3. At point (B). Check to ensure there is between 12.5 & 14.5 VDC battery voltage.
If there is low or no voltage at this point, check that the battery connections and fuse are clean and in good working order. Repair and/or replace as required. Record the voltage.
4. At point (C). With an assistant turning the steering wheel, check the voltage. The voltage should be variable. Before the wheel is turned, voltage should be near zero. The voltage should rise as the wheel is turned.

Turn the wheel quickly and note the maximum voltage. This reading should be comparable with that recorded at point (B).

If there is low or no voltage at this point contact SeaStar Technical Support.

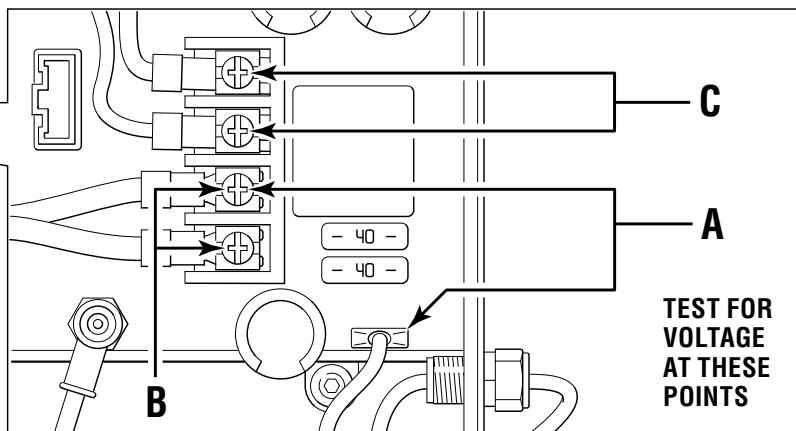
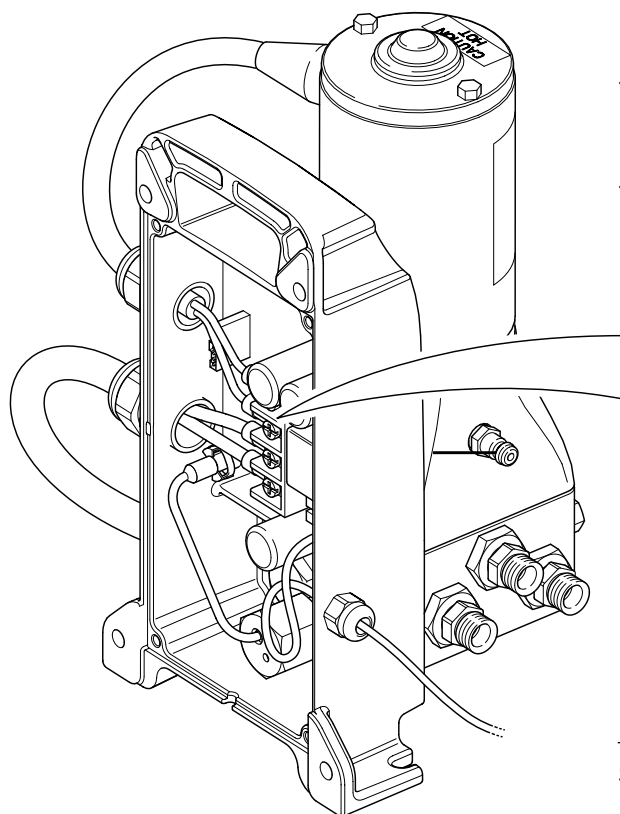


Figure A. Voltage test points A, B and C.

SeaStar Technical Support

Phone: 604-248-3858

email: seastar@seastarsolutions.com

Hours: Monday – Friday 05:00 – 15:30 PST

Web: www.seastarsolutions.com